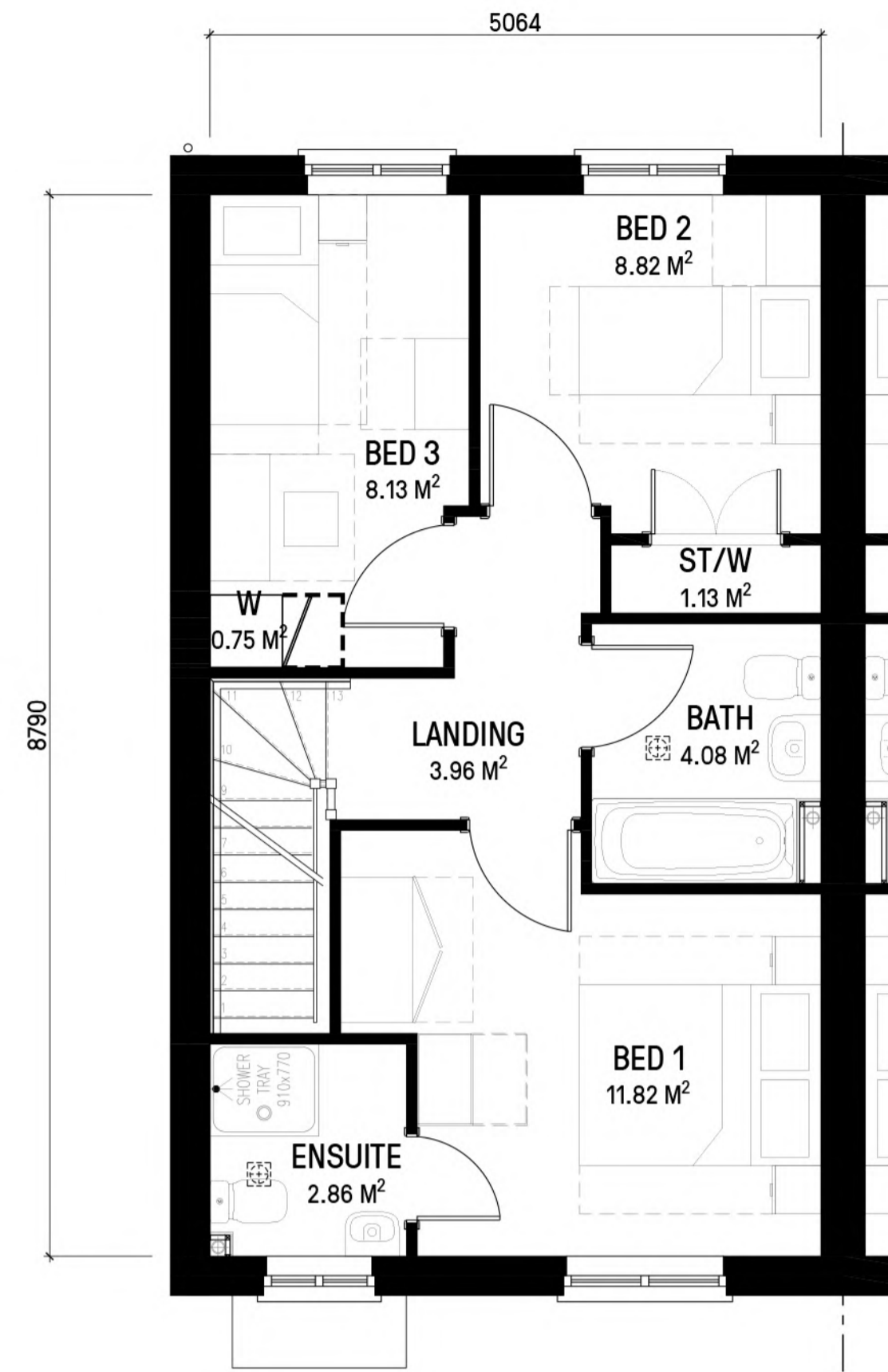


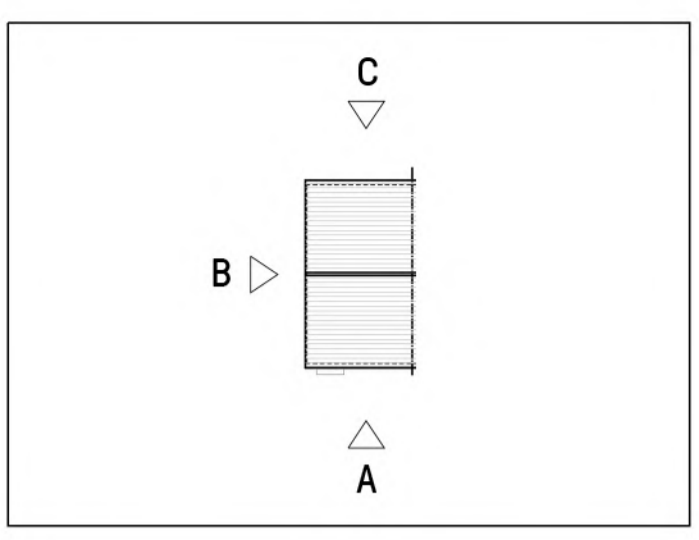
1 GROUND FLOOR
1:100
APPLICABLE FOR PLOTS
Handing-AS: 03, 06, 08, 47 & 61
Mid-Terrace: 05 & 08
Handing-OPP: 02, 04, 07, 46 & 60



2 FIRST FLOOR
1:100



3 ROOF PLAN
1:100



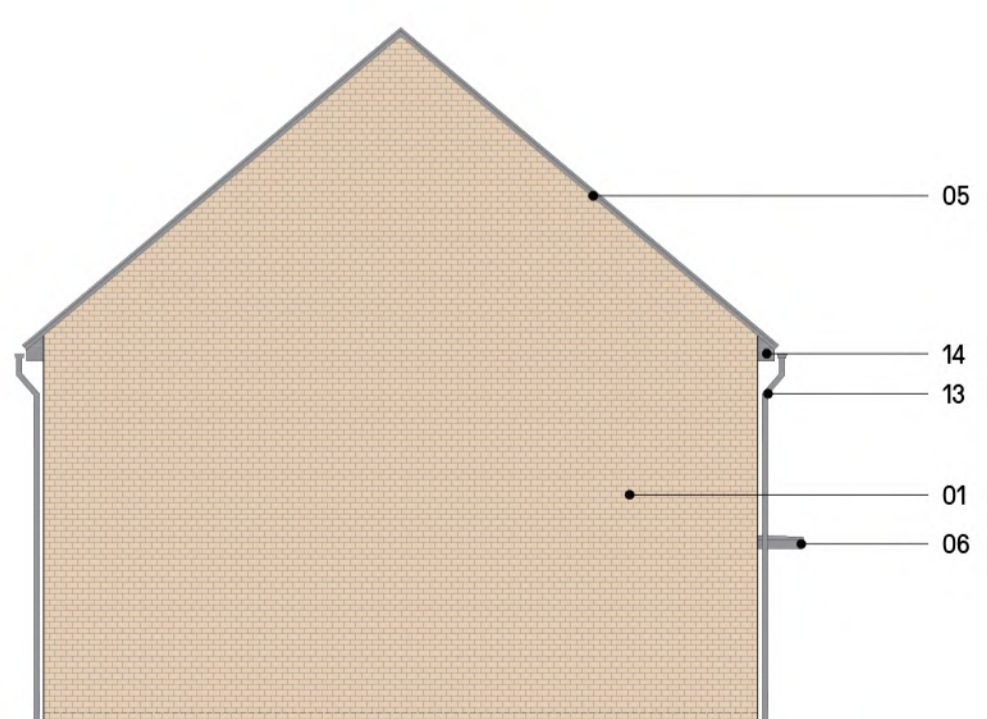
- MATERIAL KEY:**
1. Buff multi blended brick
 2. Projecting brick details
 3. UPVC windows + doors
 4. SBD Front door
 5. Grey roof tile with wet verge
 6. Grey GRP canopy
 7. Grey GRP canopy with posts
 8. Stone effect band surround detail
 9. Stone effect band detail - window sill
 10. Half soldier course - window sill
 11. Two stretcher courses projecting brick
 12. Soldier course - window header
 13. UPVC Rainwater goods
 14. Grey UPVC eaves + soffit
 15. Garage Door
 16. Grey Dormer
 17. Roof light
 18. Balcony posts
 19. Projecting Bay

MATERIAL NOTE:
Please refer to the following drawings:
- D-100's Roof & Wall Finishes;
for material finishes for all dwellings.

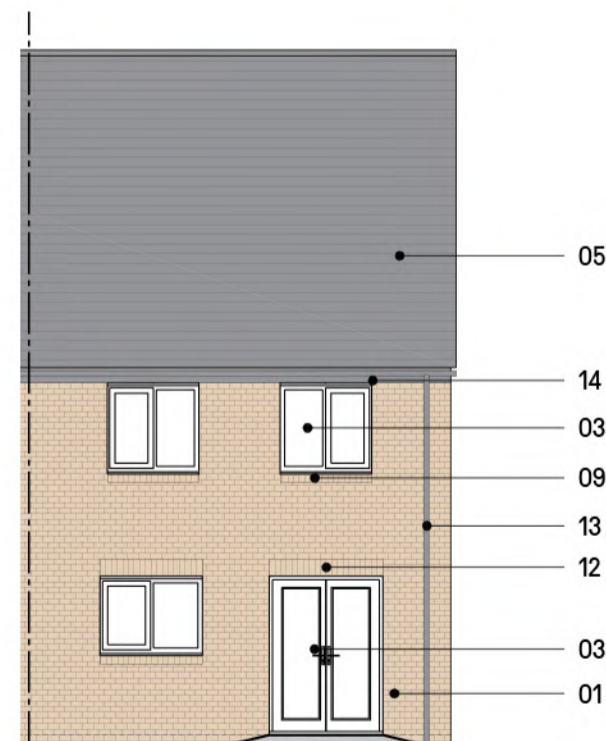
3B4P
GROSS AREA: 90.69 M² (976 SQFT)
NET AREA: 89.02 M² (958 SQFT)



4 FRONT ELEVATION - A
1:100
APPLICABLE FOR PLOTS
Handing-AS: 03, 06, 09, 47 & 61
Mid-Terrace: 05 & 08
Handing-OPP: 02, 04, 07, 46 & 60



5 SIDE ELEVATION - B
1:100



6 REAR ELEVATION - C
1:100



7 KEY PLAN
Not to Scale

Notes - Copyright in this drawing remains the property of BMS Architecture Limited. - Contractors and consultants are to advise BMS Architecture Limited of any discrepancies.	Revision A - Material key amended to show stone effect surround. B - Front facade openings increased in height. Material key amended (2). C - En-suite removed from Bed 1. Key plan amended to show mirrored plots and houses east of the site. Compliance furniture added in bedrooms where necessary.	Date 20.07.22 10.10.22 04.11.22	By MT RR RR	Chkd JB JB JB	CDM Notes 	Project CAMPFIELD ROAD SHOE BURYNNESS SOUTHEND-ON-SEA	Drawing HOUSE TYPE / NA-32 PRIVATE PLANS AND ELEVATIONS	Client 	
						Scale Various @A1	Dated JUNE-2022	Job No. 71407	

London Office: St Marks Studios, 14 Chillingworth Road, Islington London N7 8JL
T. 0203 861 3290 E. design@bms3.co.uk